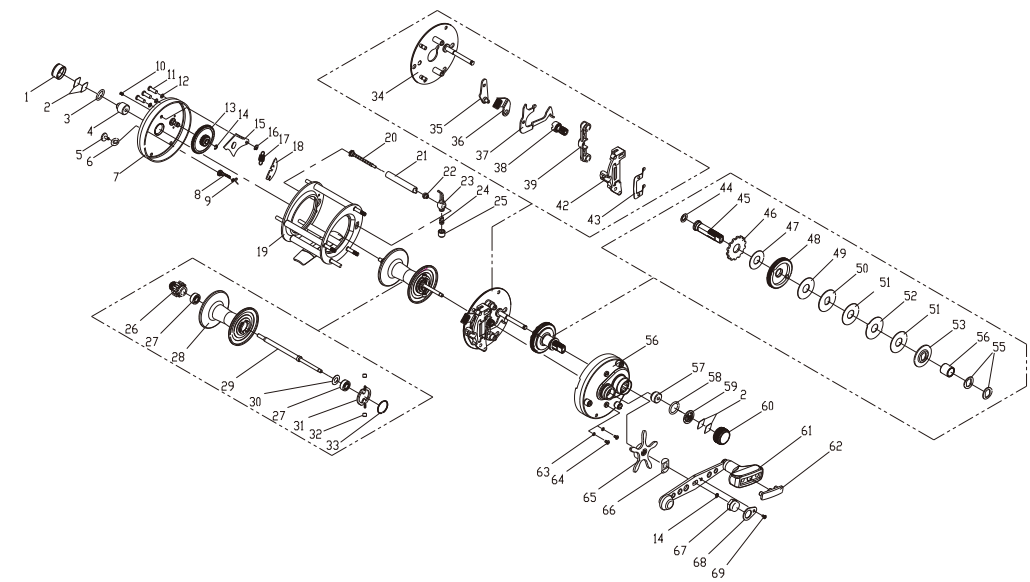
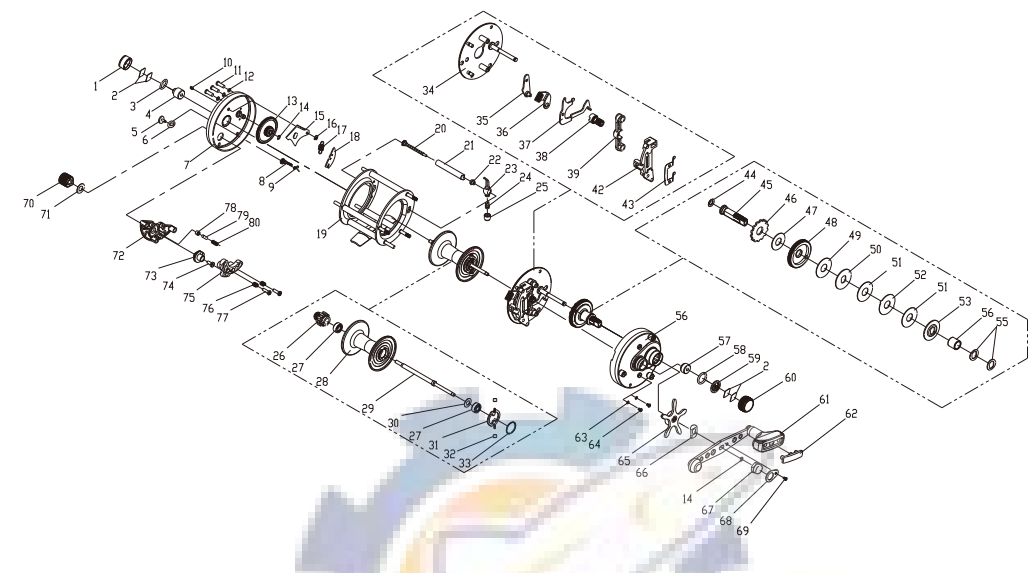


656CS



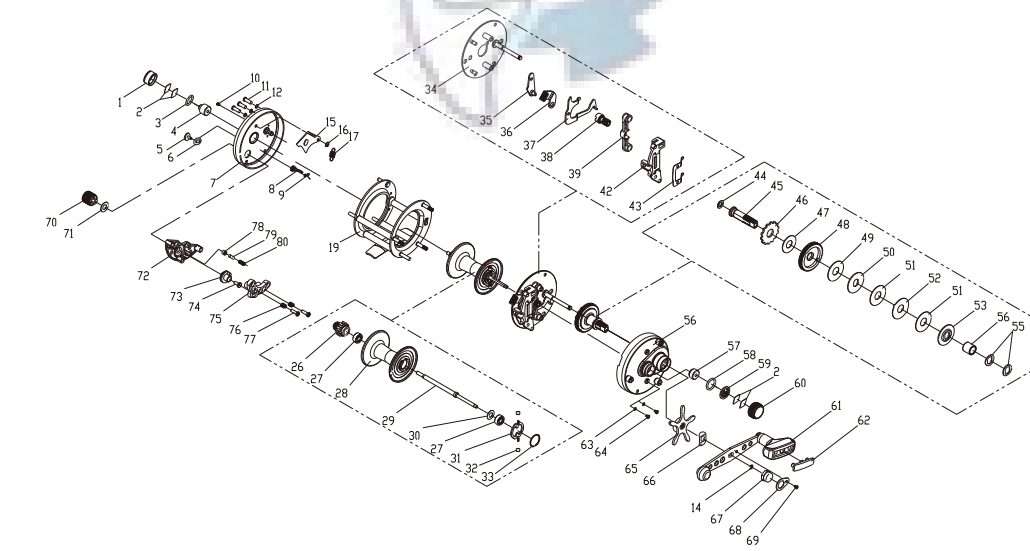
NO	Part Name	Part Code	NO	Part Name	Part Code	NO	Part Name	Part Code
1	Left cast control cap	7602-1	24	Level wind pawl	5176	49	Drag washer	66118
2	Base washer(x4)	5145	25	Level wind nut	5177	50	Key washer	66113
3	O-ring	5229	26	Line alarm cog wheel	66405	51	Drag washer (x2)	66111
4	Bushing	66303	27	Ball bearing (x2)	4*10*4(P5)	52	Ear washer	66112
5	Click Switch	8744-1	28	Spool	66401	53	Key washer	66114
6	Washer	8904	29	Spool Shaft	66402,66407	55	Spring washer (x2)	66115
7	Left side plate assembly	66301-2,66302,81705-1,7057,4491	30	Washer	66404	56	Right side plate assembly + one-way bearing	66116,66101-1,66102,6992,L7099,5326
8	Click pawl	8745	31	Centrifugal brake support	66403	57	Bushing	66137
9	Click pawl spring	4464	32	Centrifugal brake (x2)	66406	58	O-ring	5229-1
10	Pin	4468	33	C clip	KAM-9049-1	59	Clip plate	66139
11	Screw(x3)	199	34	Brake plate assembly	66130,66121,66127,66128,66131	60	Right cast control cap	7064-1
12	Washer(x3)	L7098	35	Plate	66122,66129	61	Single handle assembly	66509,66501-1,7008-1,37191-1,7006-5-2
13	Oscillation Cog. wheel	66304	36	Release trigger	66135	62	Handle knob cap	37192
14	E-Clip (x2)	8846	37	Clutch plate	66123	63	Washer (x2)	L7100
15	Click retainer	4467	38	Pinion gear	66107	64	Screw (x2)	246
16	E-Clip	3909	39	Yoke	66124	65	Star drag	66507,66508,22631-3
17	Spring	24390	42	Support plate	66125,66133,66132	66	Spacer	7058
18	Lock plate	5178	43	Spring plate	66126	67	Handle nut	66119
19	Frame assembly	66201,66202,4309,66208,66209,66206-1,66207,66211	44	Spring washer	66108	68	Handle nut retainer	HD-6505
20	Worm shaft assembly	66212,5170,66214	45	Drive shaft	66105	69	Handle nut retainer screw	8907
21	Line guide	66210	46	Release gear	66106			
22	Bushing	5173	47	Drive washer	66110			
23	Level wind assembly	66213,22002	48	Drive gear	66109			

656CSM



NO	Part Name	Part Code	NO	Part Name	Part Code	NO	Part Name	Part Code
1	Left cast control cap	7602-1	27	Ball bearing (x2)	4*10*4(P5)	56	Right side plate assembly + one-way bearing	66116,66101-1,66102,6992,L7099,5326
2	Base washer(x4)	5145	28	Spool	66401	57	Bushing	66137
3	O-ring	5229	29	Spool shaft	66402,66407	58	O-ring	5229-1
4	Bushing	66303	30	Washer	66404	59	Clip plate	66139
5	Click switch	8744-1	31	Centrifugal brake support	66403	60	Right cast control cap	7064-1
6	Washer	8904	32	Centrifugal brake (x2)	66406	61	Single handle assembly	66509,66501-1,7008-1,37191-1,7006-5-2
7	Left side plate	66301-2,66302,81705-1,7057,4491	33	C clip	KAM-9049-1	62	Handle knob cap	37192
8	Click pawl	8745	34	Brake plate assembly	66130,66121,66127,66128,66131	63	Washer (x2)	L7100
9	Click pawl spring	4464	35	Plate	66122,66129	64	Screw (x2)	246
10	Pin	4468	36	Release trigger	66135	65	Star drag	66507,66508,22631-3
11	Screw(x3)	199	37	Clutch plate	66123	66	Spacer	7058
12	Washer(x3)	L7098	38	Pinion gear	66107	67	Handle nut	66119
13	Oscillation cog. wheel	66304	39	Yoke	66124	68	Handle nut retainer	HD-6505
14	E-Clip (x2)	8846	42	Support plate	66125,66133,66132	69	Handle nut retainer screw	8907
15	Click retainer	4467	43	Spring plate	66126	70	Switch	66313
16	E-Clip	3909	44	Spring washer	66108	71	Washer	66316
17	Spring	24390	45	Drive shaft	66105	72	Magnetic seat	66314
18	Lock plate	5178	46	Release gear	66106	73	Lifter	66312
19	Frame assembly	66201,66202,4309,66208,66209,66206-1,66207,66211	47	Drive washer	66110	74	Screw	246
20	Worm shaft assembly	66212,5170,66214	48	Drive gear	66109	75	Magnetic assembly	66311,HD-6311
21	Line guide	66210	49	Drag washer	66118	76	Spring (x2)	HD-6309
22	Bushing	5173	50	Key washer	66113	77	Screw (x2)	1-48
23	Level wind assembly	66213,22002	51	Drag washer (x2)	66111	78	Click	66315
24	Level wind pawl	5176	52	Ear washer	66112	79	Pin	66317
25	Level wind nut	5177	53	Key washer	66114	80	Spring	66318
26	Line alarm cog wheel	66405	55	Spring washer (x2)	66115			

656CTM



NO	Part Name	Part Code	NO	Part Name	Part Code	NO	Part Name	Part Code
1	Left cast control cap	7602-1	33	C clip	KAM-9049-1	58	O-ring	5229-1
2	Base washer(x4)	5145	34	Brake plate assembly	66130,66121,66127,66128,66131	59	Clip plate	66139
3	O-ring	5229	35	Plate	66122,66129	60	Right cast control cap	7064-1
4	Bushing	66303	36	Release trigger	66135	61	Single handle assembly	66509,66501-1,7008-1,37191-1,7006-5-2
5	Click switch	8744-1	37	Clutch plate	66123	62	Handle knob cap	37192
6	Washer	8904	38	Pinion gear	66107	63	Washer (x2)	L7100
7	Left side plate	66301-2,66302,81705-1,7057,4491	39	Yoke	66124	64	Screw (x2)	246
8	Click pawl	8745	42	Support plate	66125,66133,66132	65	Star drag	66507,66508,22631-3
9	Click pawl spring	4464	43	Spring plate	66126	66	Spacer	7058
10	Pin	4468	44	Spring washer	66108	67	Handle nut	66119
11	Screw(x3)	199	45	Drive shaft	66105	68	Handle nut retainer	HD-6505
12	Washer(x3)	L7098	46	Release gear	66106	69	Handle nut retainer screw	8907
15	Click retainer	4467	47	Drive washer	66110	70	Switch	66313
16	E-Clip	3909	48	Drive gear	66109	71	Washer	66316
17	Spring	24390	49	Drag washer	66118	72	Magnetic seat	66314
19	Frame assembly	66201,66202,4309,66208,66209,66206-1,66207,66211	50	Key washer	66113	73	Lifter	66312
26	Line alarm cog wheel	66405	51	Drag washer (x2)	66111	74	Screw	246
27	Ball bearing (x2)	4*10*4(P5)	52	Ear washer	66112	75	Magnetic assembly	66311,HD-6311
28	Spool	66401	53	Key washer	66114	76	Spring (x2)	HD-6309
29	Spool Shaft	66402,66407	55	Spring washer (x2)	66115	77	Screw (x2)	1-48
30	Washer	66404	56	Right side plate assembly + one-way bearing	66116,66101-1,66102,6992,L7099,5326	78	Click	66315
31	Centrifugal brake support	66403	57	Bushing	66137	79	Pin	66317
32	Centrifugal brake (x2)	66406				80	Spring	66318

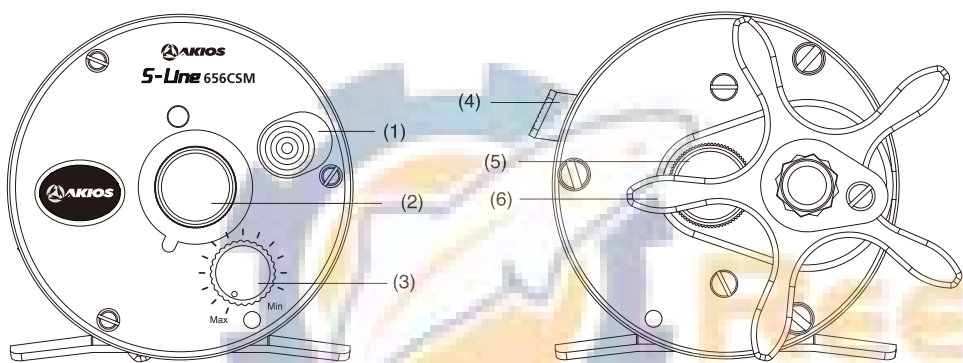


www.akiosfishingtackle.com



**Congratulations** on your purchase of an AKIOS Reel. AKIOS Reels are simple to operate, even though they are precision machined instruments. Before using your AKIOS Reel, please take a few moments to read this instruction guide as it will help you to get the best performance.

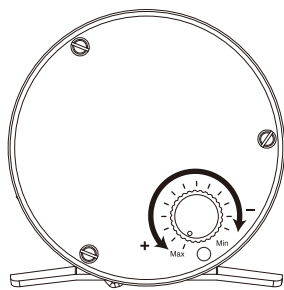
**WARRANTY:**AKIOS warrants to the original purchaser that this product will be free from non-conformities in material or workmanship for the period of one year from the date of purchase. Please keep your receipt for all warranty claims. To request warranty repairs ,register your purchase and to activate your warranty please log onto our website at [www.akiosfishingtackle.com](http://www.akiosfishingtackle.com) and follow instructions under the heading "Warranty". Once registered your reel is covered under it's 12 month warranty from date of purchase with a valid dated receipt of proof of purchase.To request a warranty repair on your Akios reel please follow details on our website under "Warranty". If you need to contact us please do so through "Contact Us" on webite or write to P.O.Box 167 Stockport SK7 9AN England



- |                                 |                              |
|---------------------------------|------------------------------|
| (1) Spool click                 | (4) Free spool button        |
| (2) Mechanical brake (Left)     | (5) Mechanical brake (Right) |
| (3) Mag brake (Selected models) | (6) Adjustment star for drag |

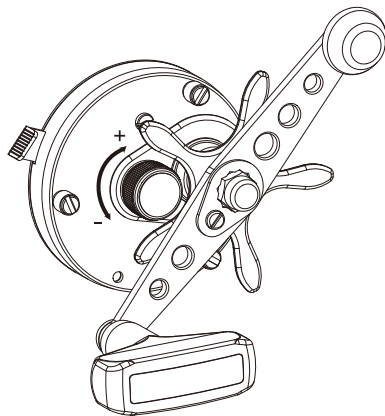
#### MAG BRAKE (selected models):

Akios Mag Brake is a fully adjustable magnetic brake that can be set to help reduce the possibility of over-runs on the spool during casting. If you are using a Mag Braked reel for the first time add more mag brake power to the spool which will limit casting distance, but as you become more confident you can reduce the mag setting and the distances will increase. The mag brake can also be a great assistance when conditions change and you have strong headwinds for example or you choose to fish with larger baits.



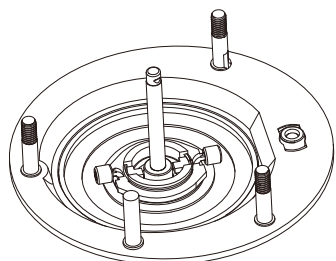
#### MECHANICAL BRAKE (Right side)

For maximum casting distance and minimal tendency to over run it is necessary to adjust the mechanical brake and is a case of trial and error dependant on bait,weight or lure being used. Adjust brake a little at a time to balance spool so the spool is set against weight,bait or lure when on line.



#### CENTRIFUGAL BRAKE

Centrifugal brake weights are snapped onto retainer pins attached to the spool. As the spool spins, centrifugal force creates pressure from the weights on the brake drum attached to the frame.This pressure helps prevent the spool from over running at the start of the cast. Be sure to slide the brake weights inward on their pins before re-assembling your reel.

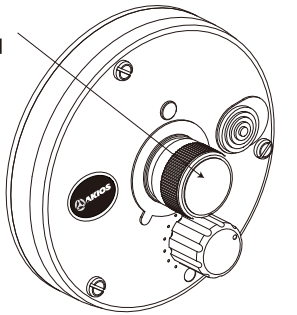


#### MECHANICAL BRAKE (Left side)

The Mechanical brake adjustment on the left side plate and the centrifugal brake work together to virtually eliminate backlash.The speed of spool rotation and side play are adjustable with the calibrated dial on the side plate which serves as a memory device in matching various bait, line and rod combinations.

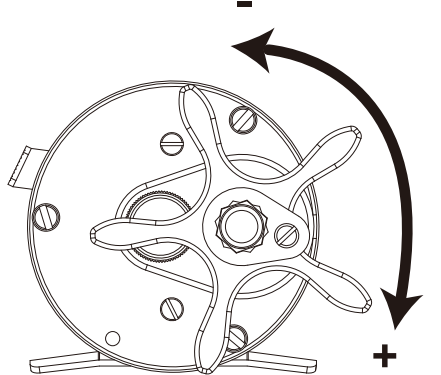
Starting with the scale set at the "0"position, gradually increase the setting until you reach the proper setting suited to your casting ability.

**Note: All adjustments should be made by using the brake control on the left side plate on the reels.**



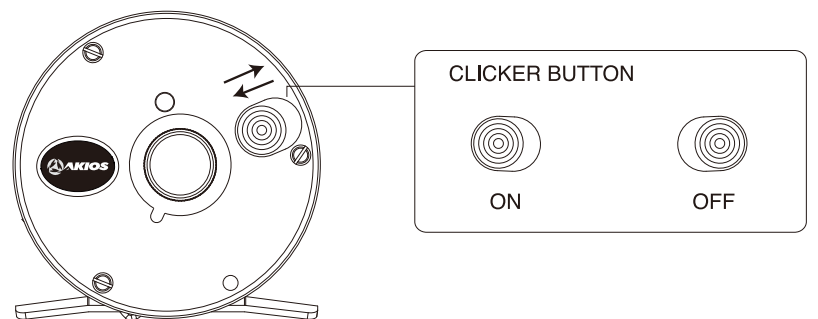
#### DRAG-FOR HOOKING AND CONTROLLING HOOKED FISH

Set by turning the adjustment star on the side of the reel handle, the drag should be adjusted to approximately one third of the breaking test of the line being used. This is best done by tying the line to scales for precise adjustment. Be sure reel is first mounted on a rod and the line run through rod guides before tying to scales. The drag should always be released before the line reaches its breaking point. Some techniques require higher settings. Any adjustment above half the line strength risks line breakage.



#### SPOOL CLICK

This simple on-off slide switch engages an audible alarm to alert the angler that line is moving from the spool. Most used when trolling or still fishing Alarm must be disengaged when casting and should also be released when retrieving or fighting a fish.

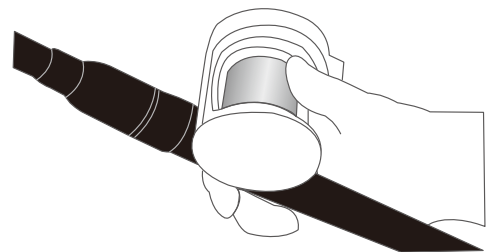


#### BASIC CASTING

With a multiplier, clamp the thumb of your rod hand hard on the spool to stop it turning, and put the reel into free-spool mode, by depressing the free spool button on right hand side plate.

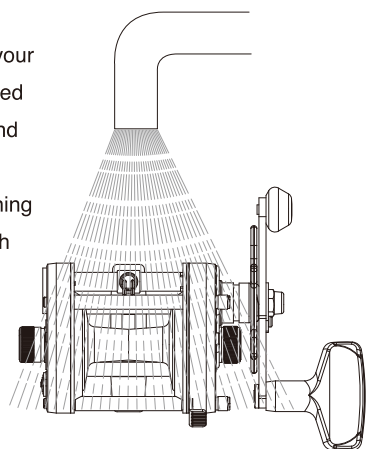
#### LINE CONTROL:

To slow down a hooked fish on a multiplier, apply gentle thumb pressure to the revolving spool ( but beware of friction burns), overruns are rare with modern reels because they have magnetic braking systems.



#### MAINTENANCE

As with any piece of precision product, your AKIOS will require regular maintenance. Lack of this could void warranty. To keep your reel working at peak efficiency, it should be cleaned and lubricated after each use. Gently rinse the reel in fresh water, wipe it dry and lubricate according to the accompanying chart. At least once a season your reel should be disassembled for a a thorough cleaning and re-lubrication. Refer to the exploded parts view supplied with your reel.



#### Lubrication:

